

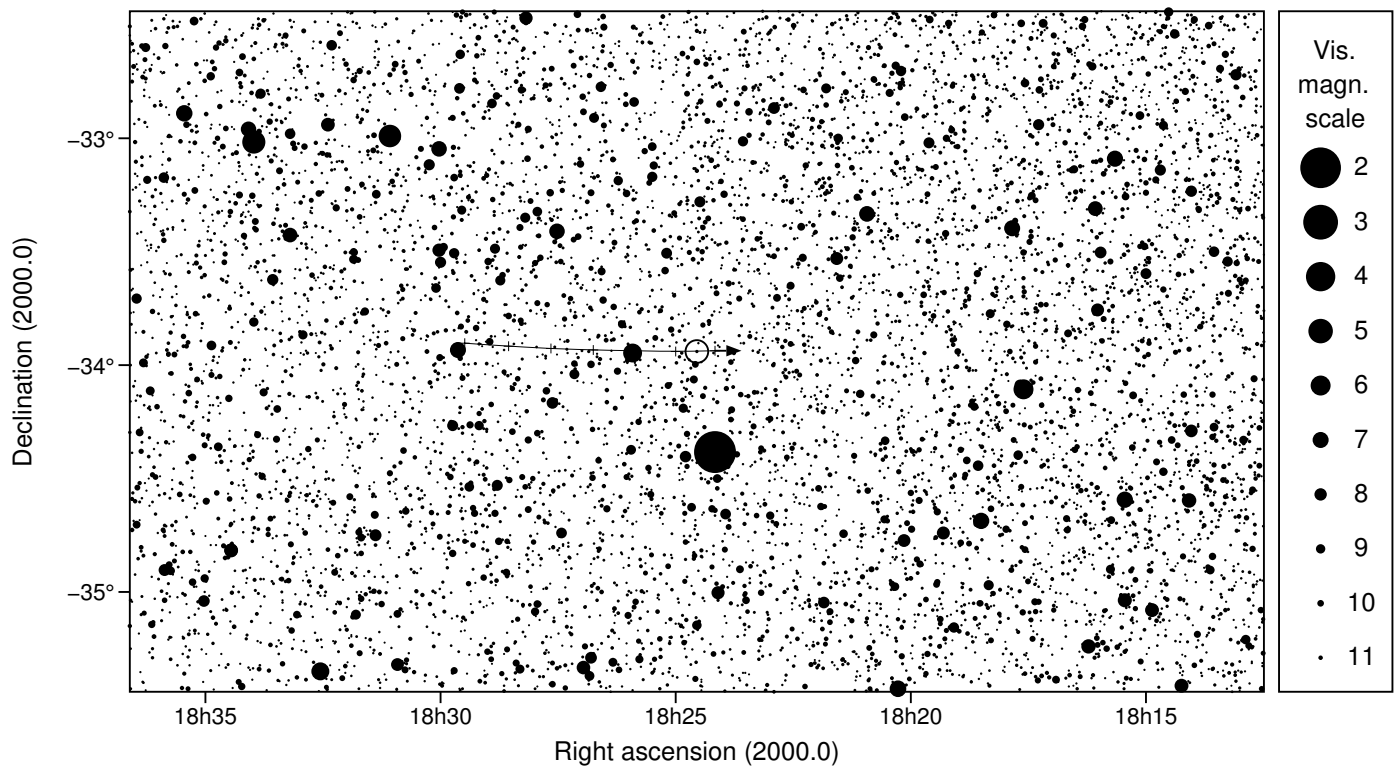
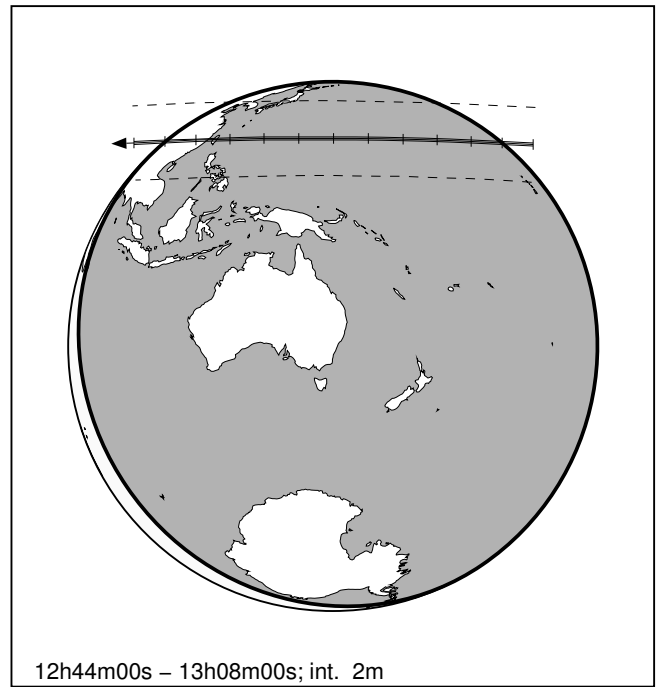
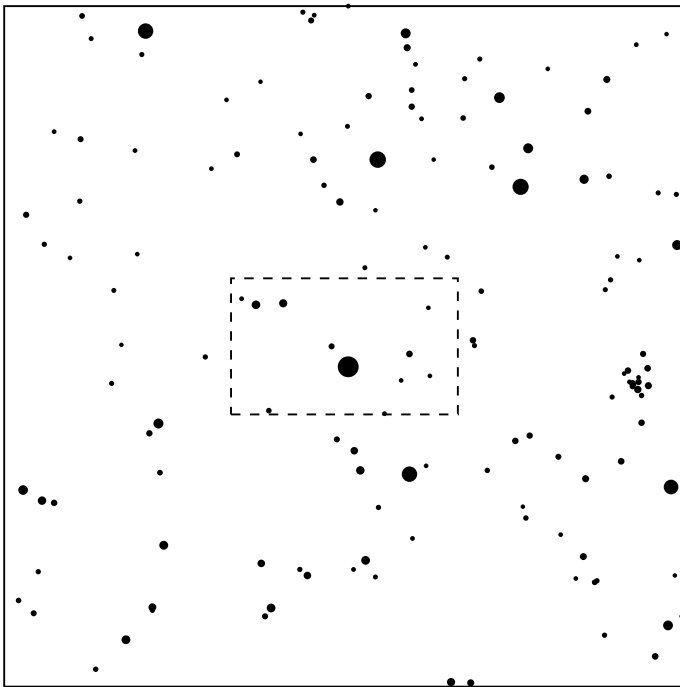
578 Happelia & UCAC4-281-187499

2018 jul 14 12^h56.0^m U.T.

Planet: $a = 2.75$, $e = 0.20$
 V. mag. = 12.00 Diam. = 71.6 km = 0.08"
 $\mu = 26.21''/h$ $\pi = 7.09''$ Ref. = EG2016

Star: Source cat. UCAC4
 $\alpha = 18^h24^m33.023^s$ $\delta = -33^\circ56'25.81''$
 Vmag = 11.65 Bmag = 11.91

$\Delta m = 0.9$ Max. dur. = 10.9s Sun : 160° Moon : 142° , 3%



578 Happelia & UCAC4-281-187499

2018 jul 14 12^h56.0^m U.T.

